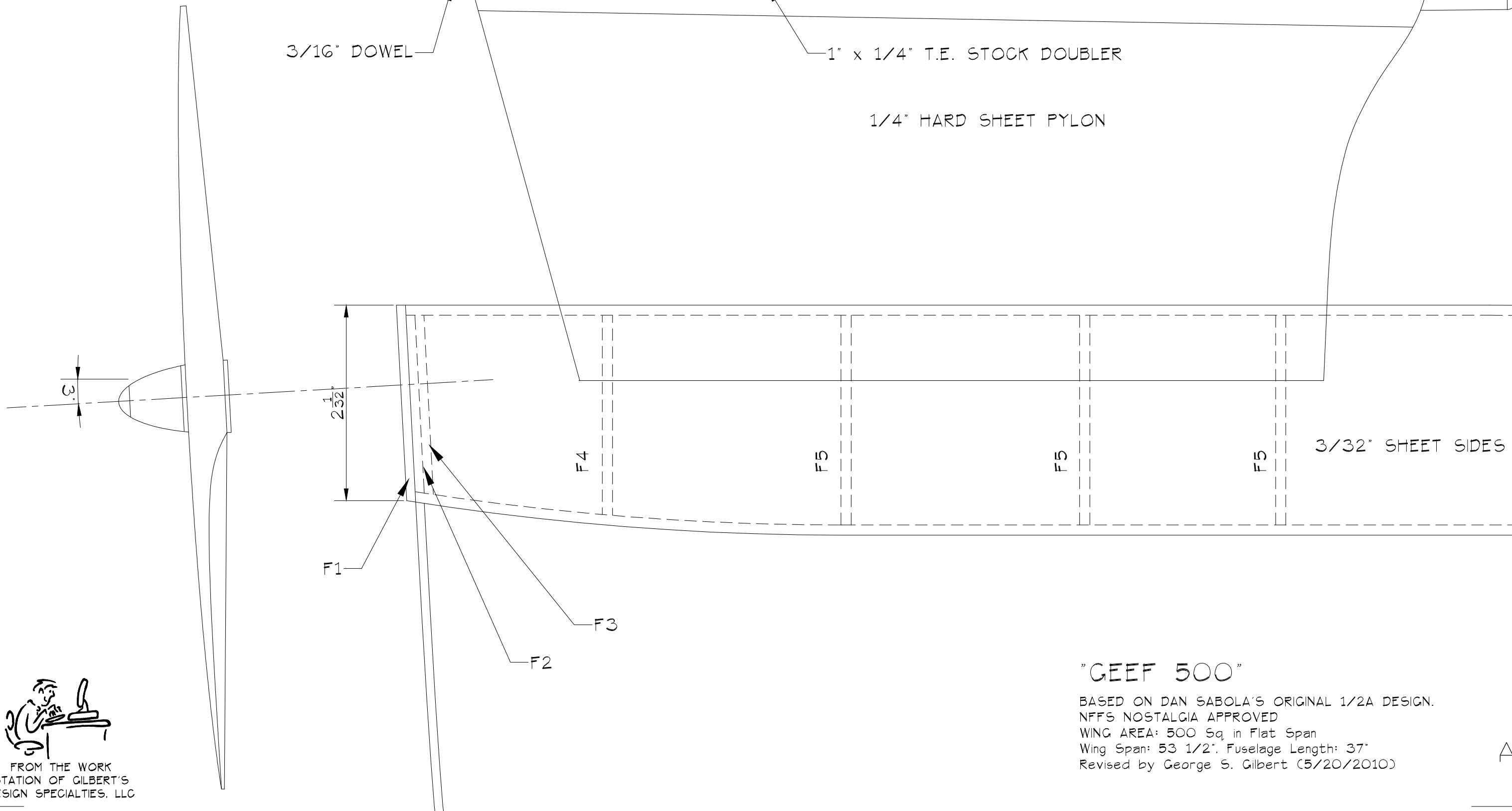
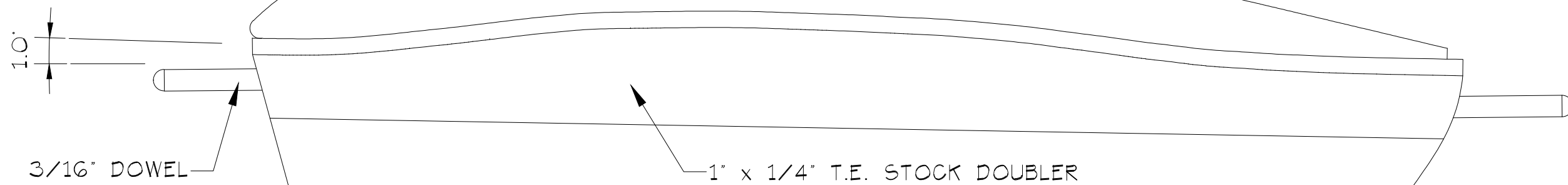


A



"GEEF 500"

BASED ON DAN SABOLA'S ORIGINAL 1/2A DESIGN.
 NFFS NOSTALGIA APPROVED
 WING AREA: 500 Sq. in Flat Span
 Wing Span: 53 1/2". Fuselage Length: 37"
 Revised by George S. Gilbert (5/20/2010)

A

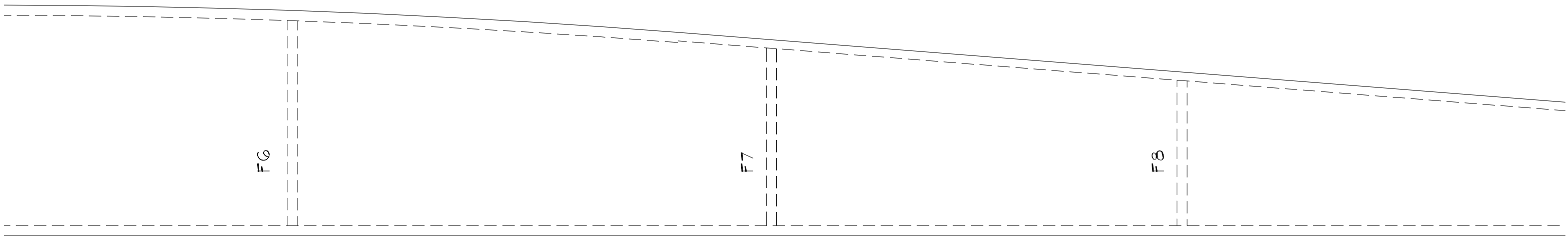


FROM THE WORK
 STATION OF GILBERT'S
 DESIGN SPECIALTIES, LLC

A

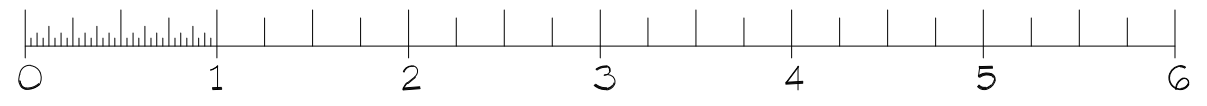
B

3/32" SHEET TOP + BOTTOM



FUSELAGE

FULL SCALE

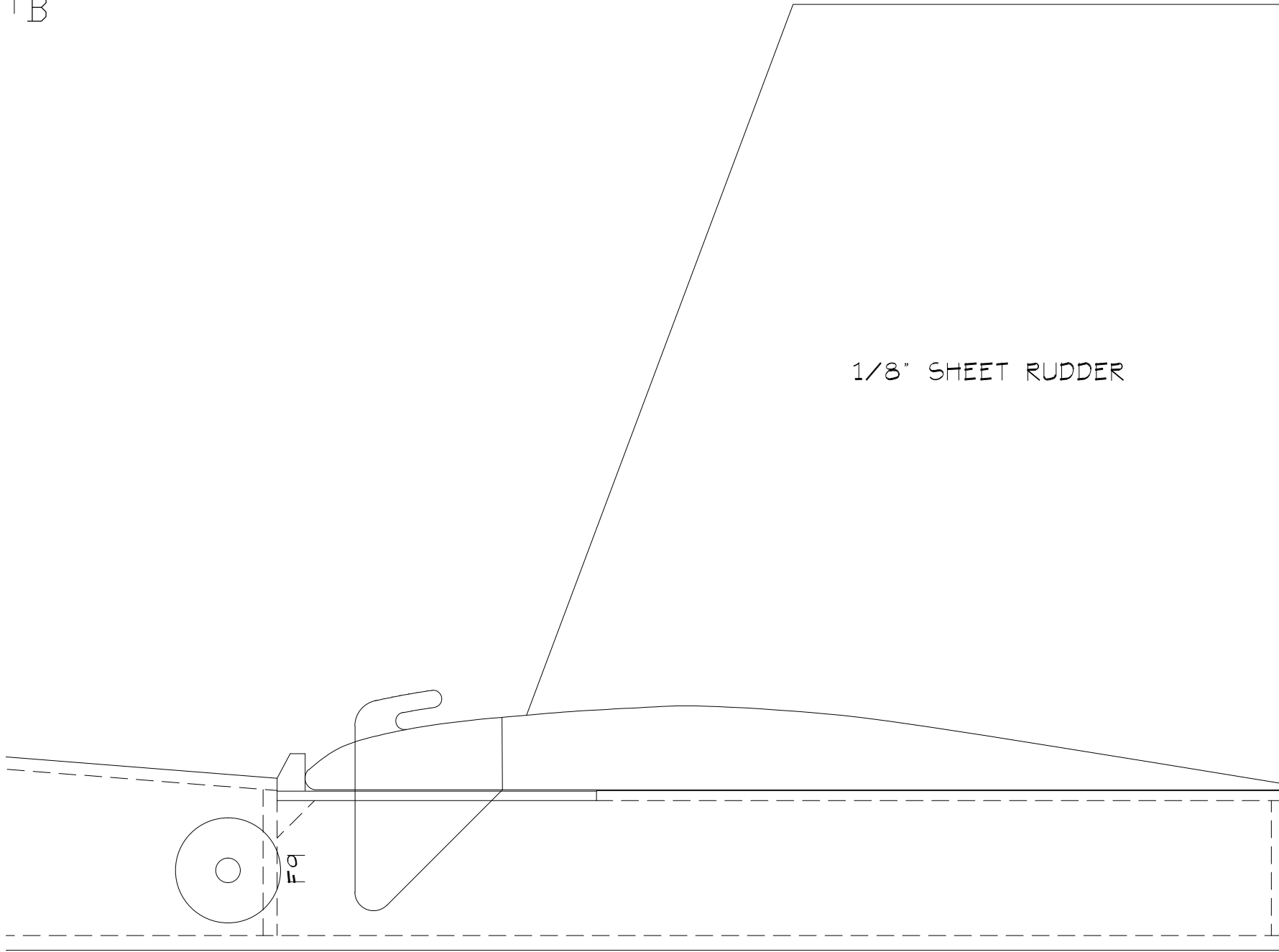


A

B

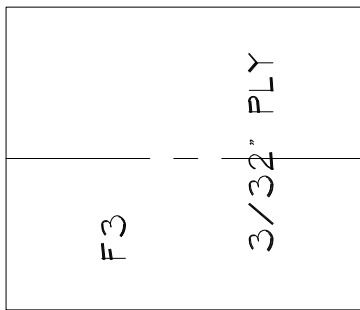
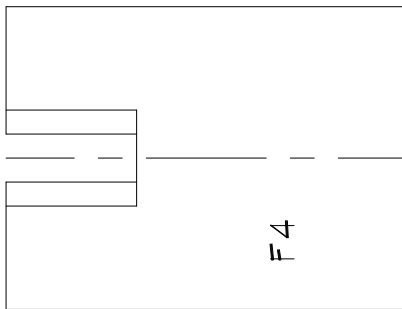
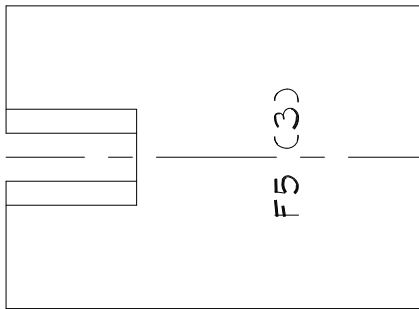
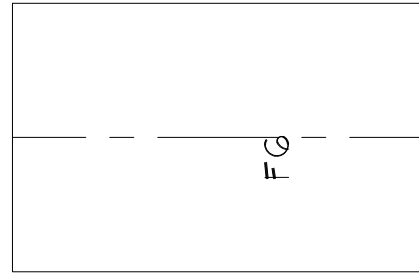
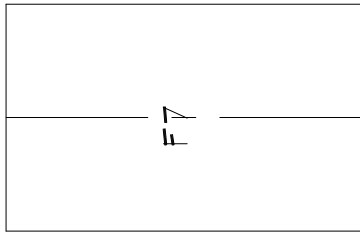
B

B

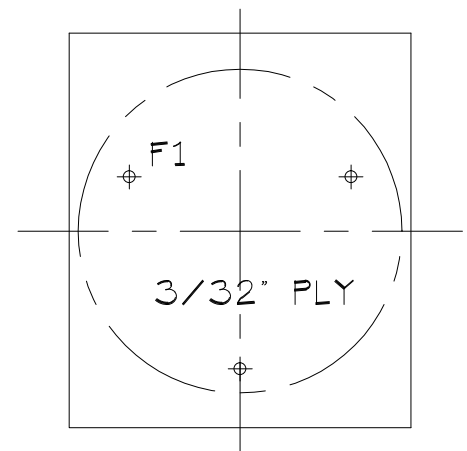
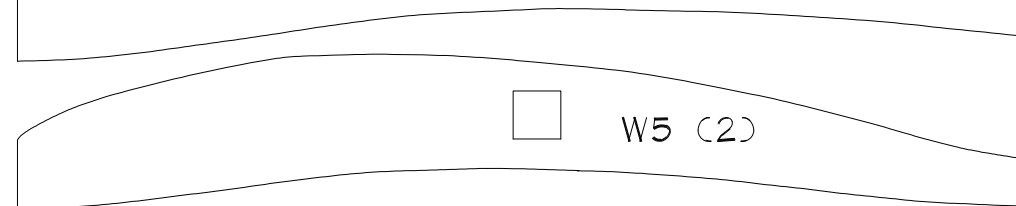
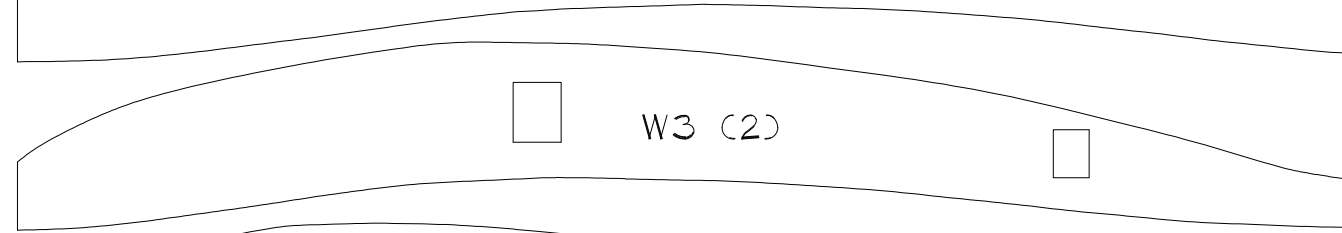
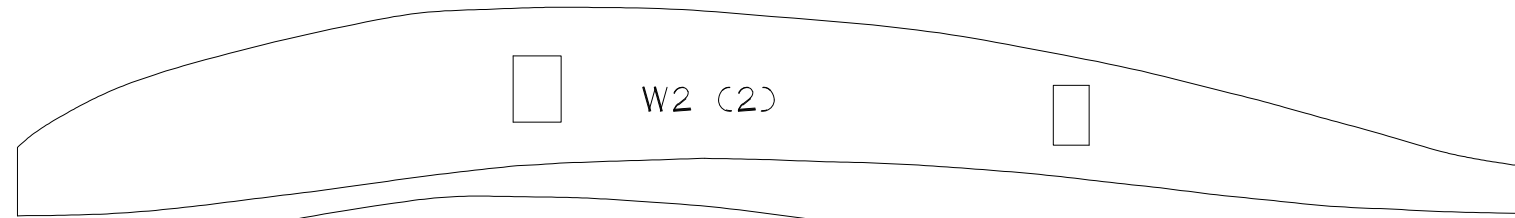
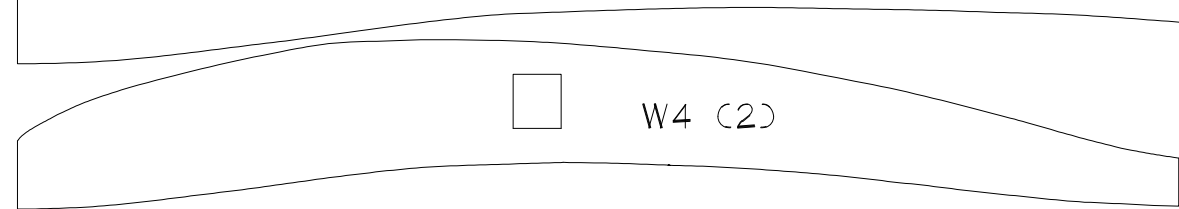
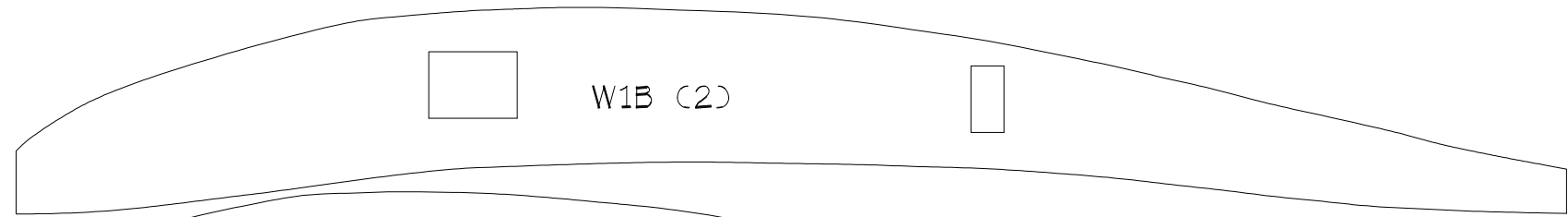
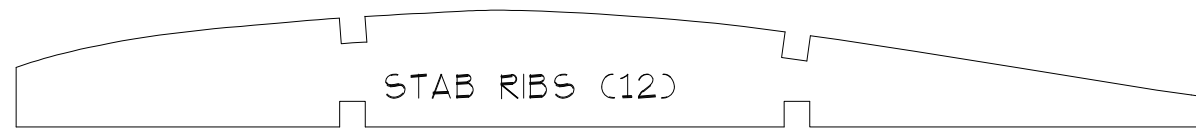
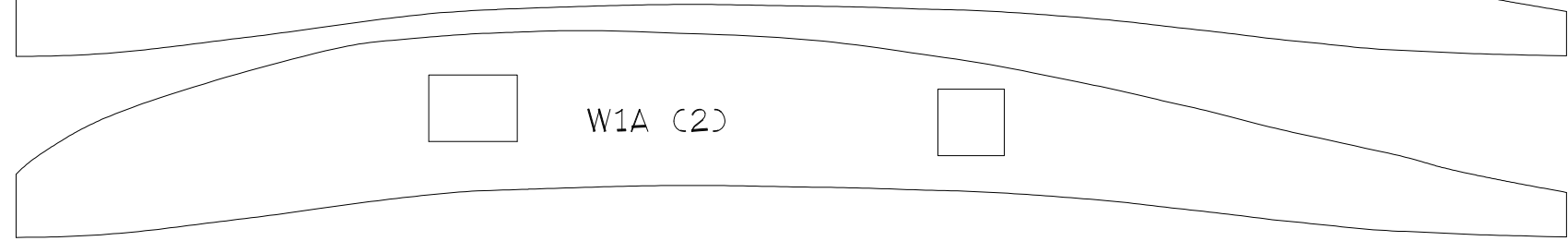
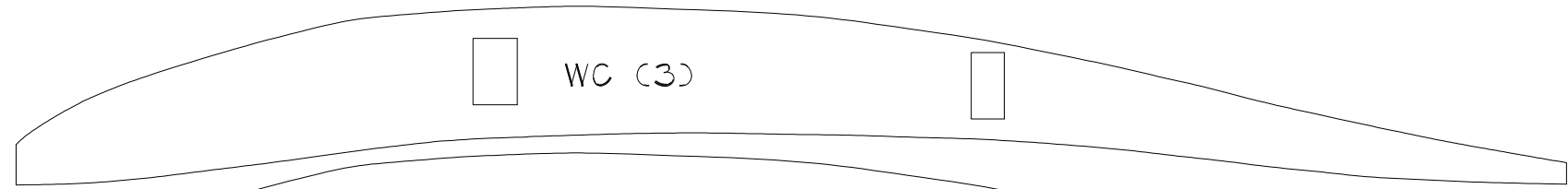


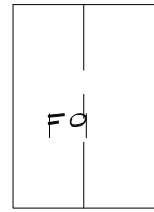
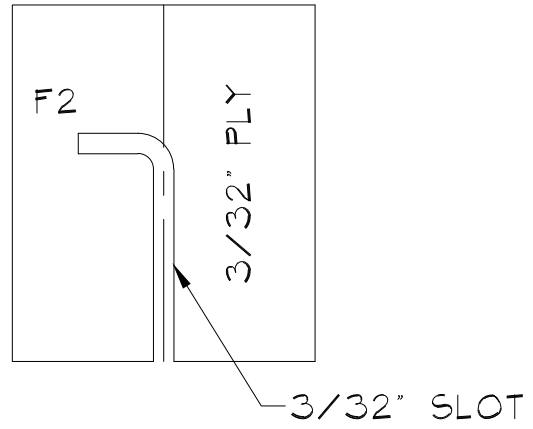
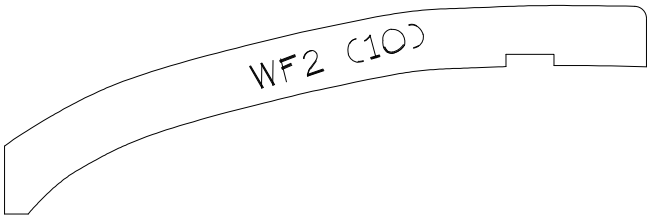
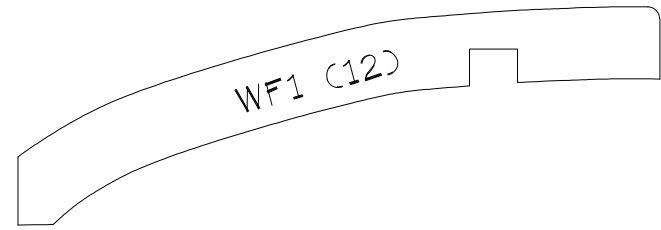
B

B

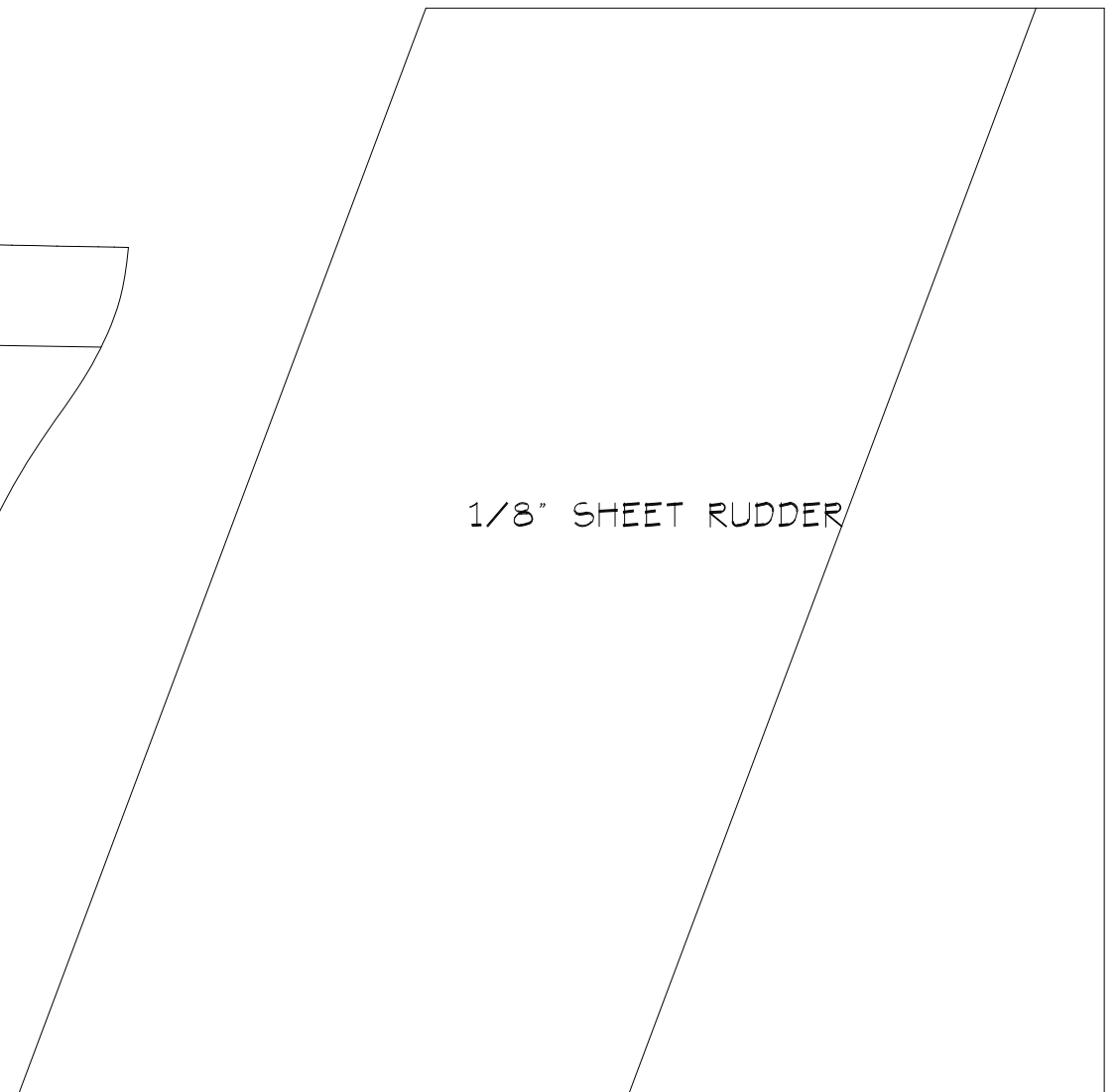
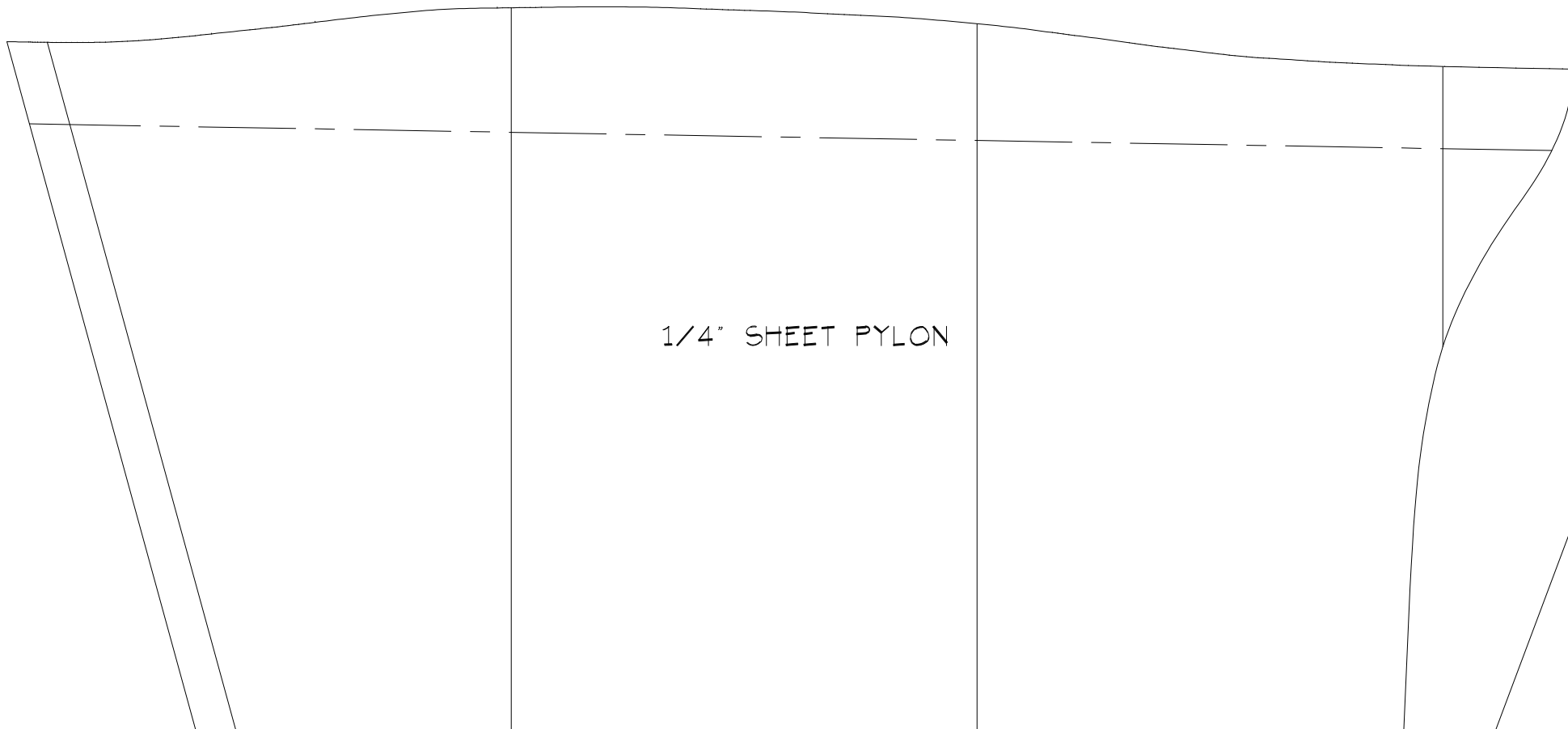
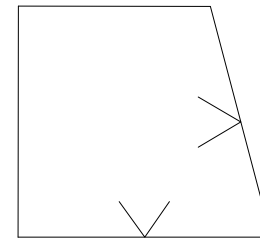
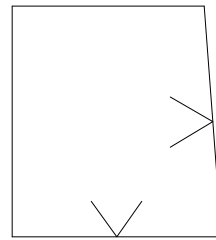
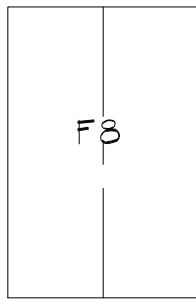


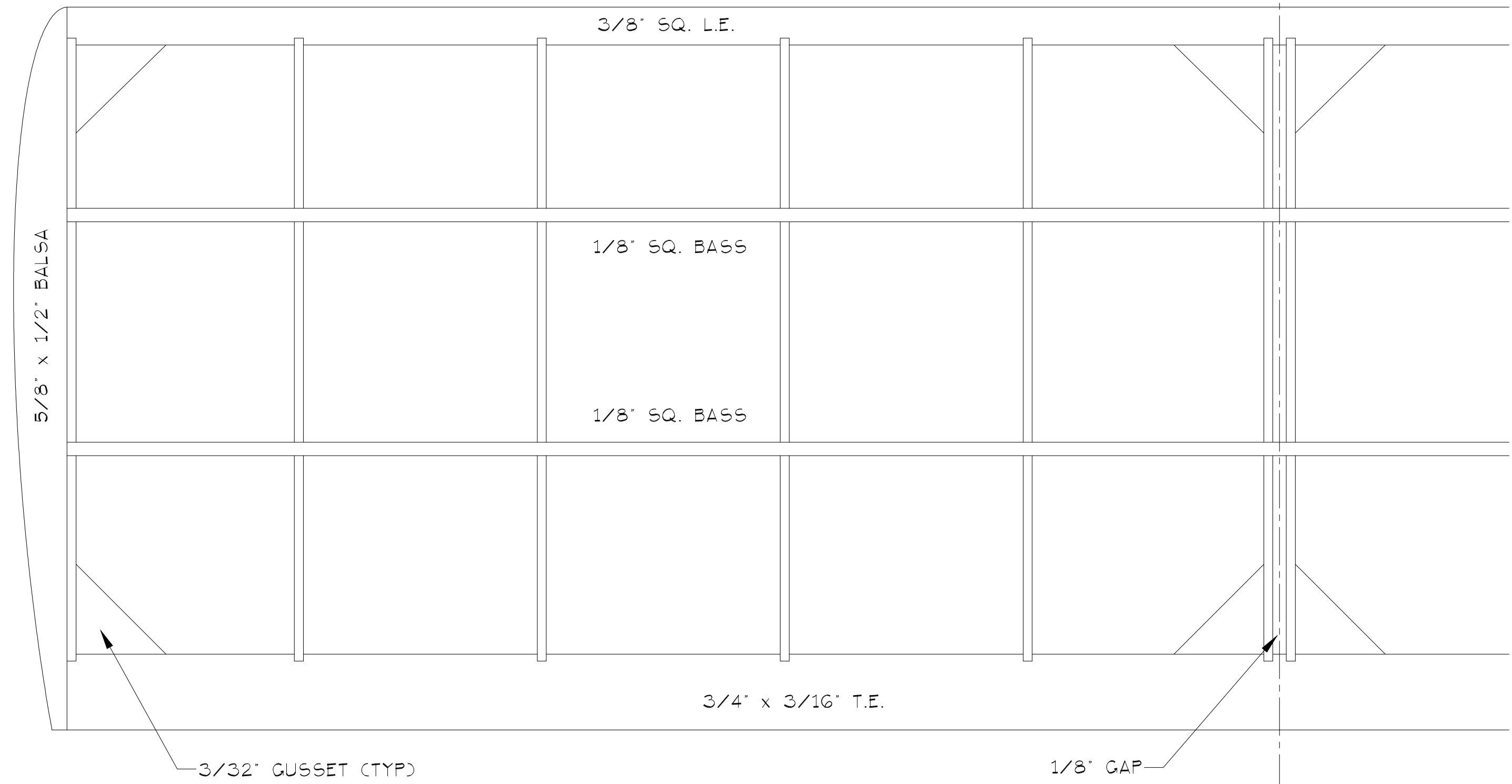
3/32" SHEET BULKHEADS





3/32" Balsa

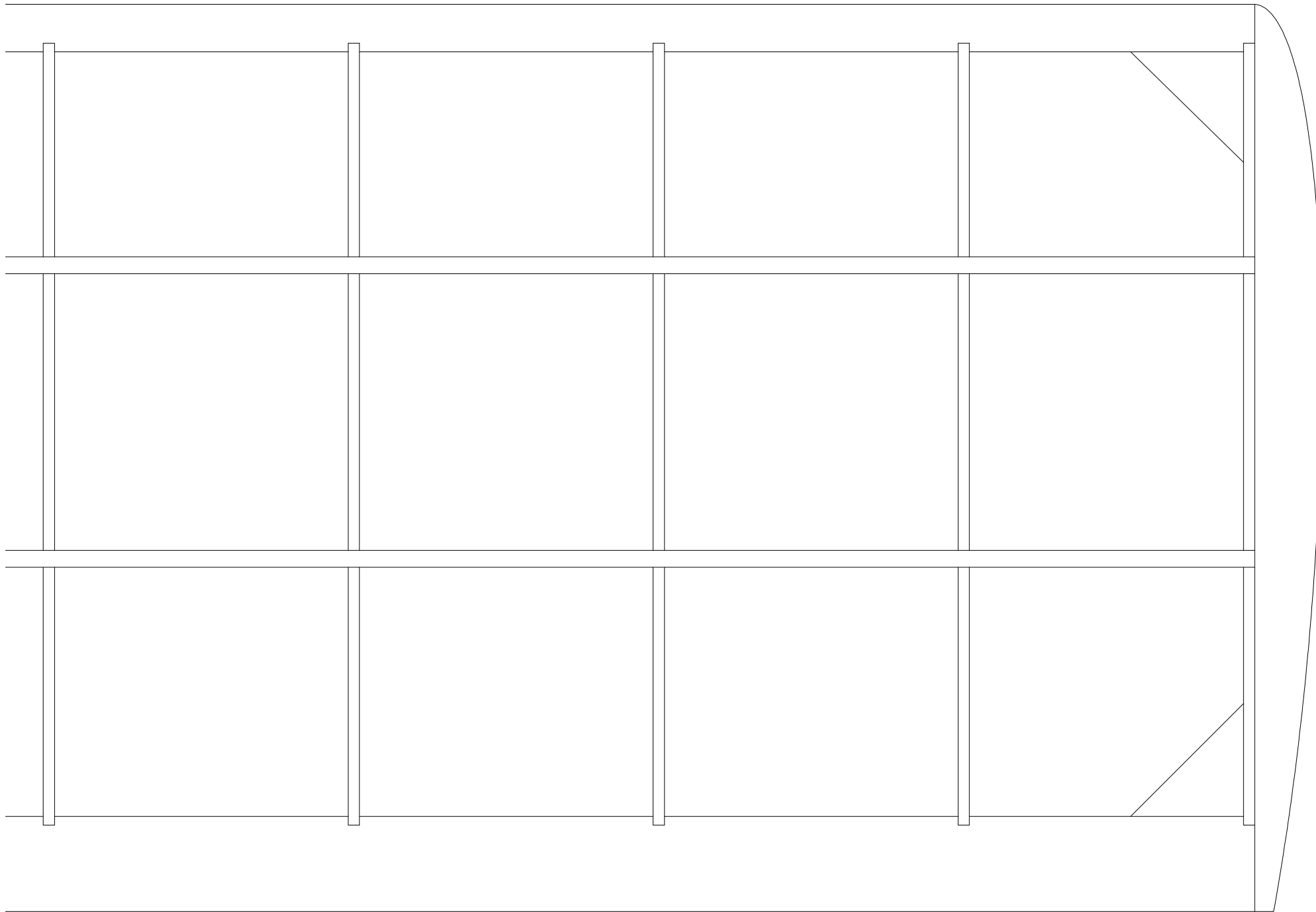




STAB PLAN
 FULL SCALE

C

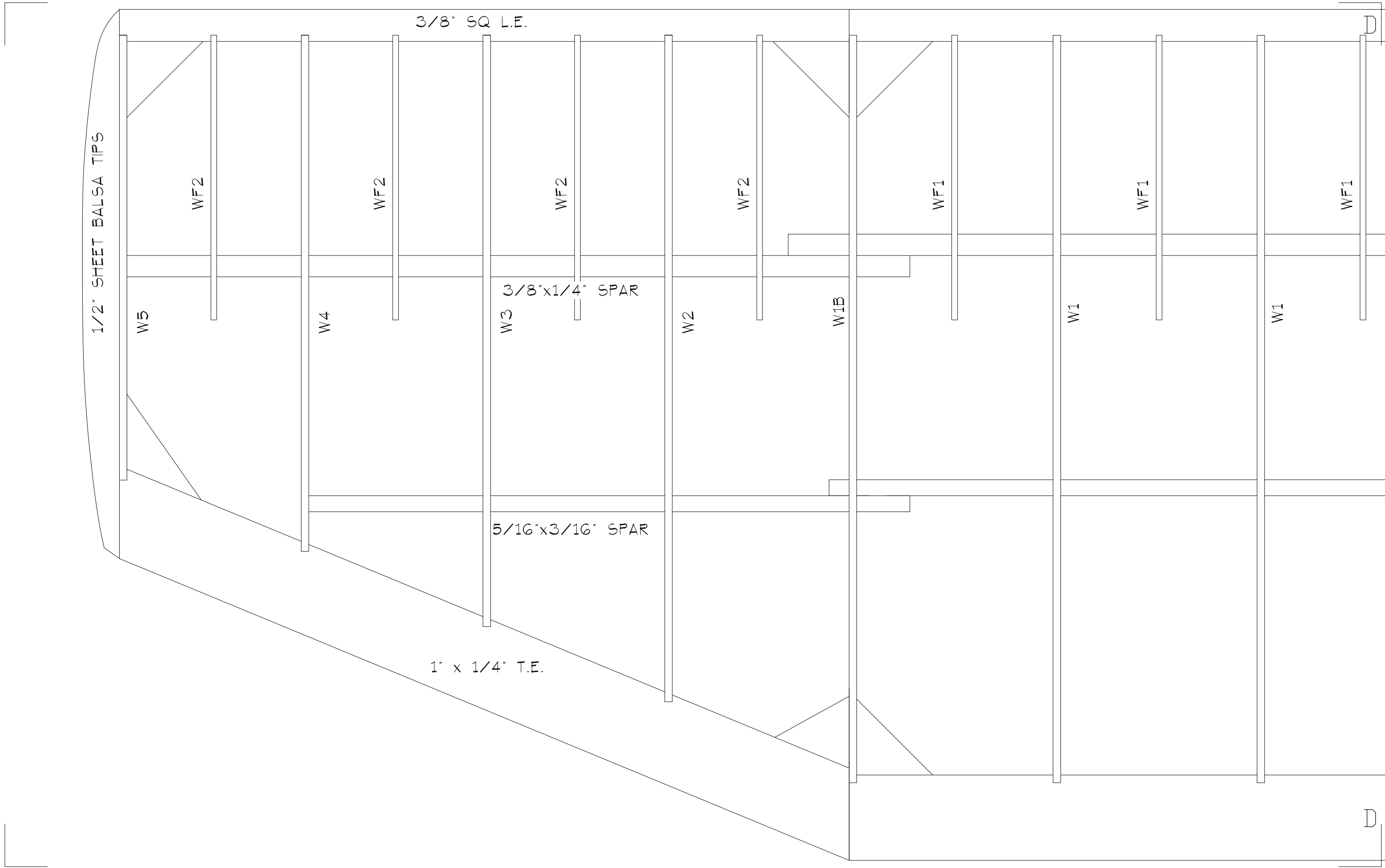
C

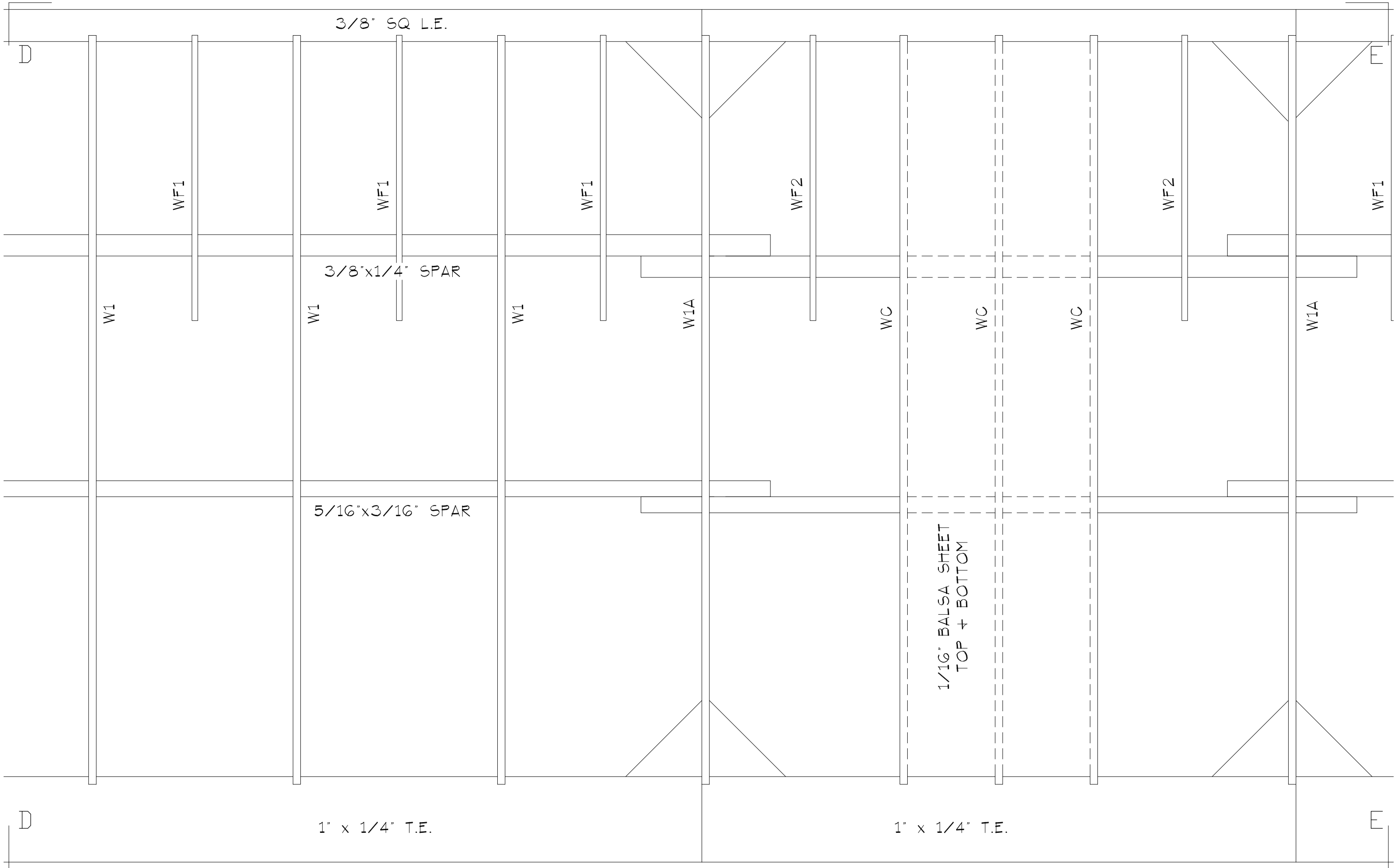


SCALE

C

C





3/8" SQ L.E.

3/8"x1/4" SPAR

5/16"x3/16" SPAR

1/16" Balsa Sheet
TOP + BOTTOM

1" x 1/4" T.E.

1" x 1/4" T.E.

D

E

D

E

W1

WF1

W1

WF1

W1

WF1

W1A

WF2

WC

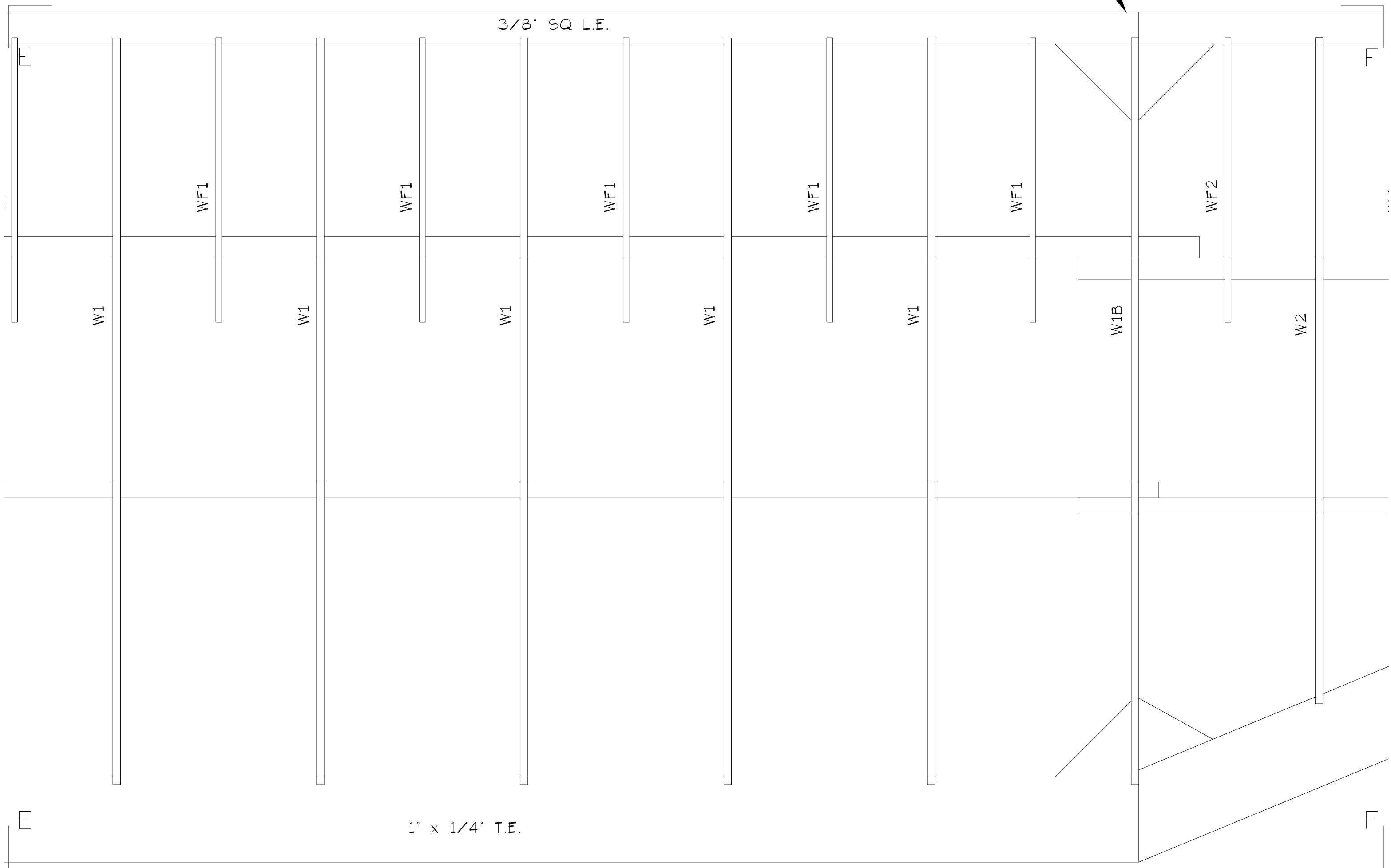
WC

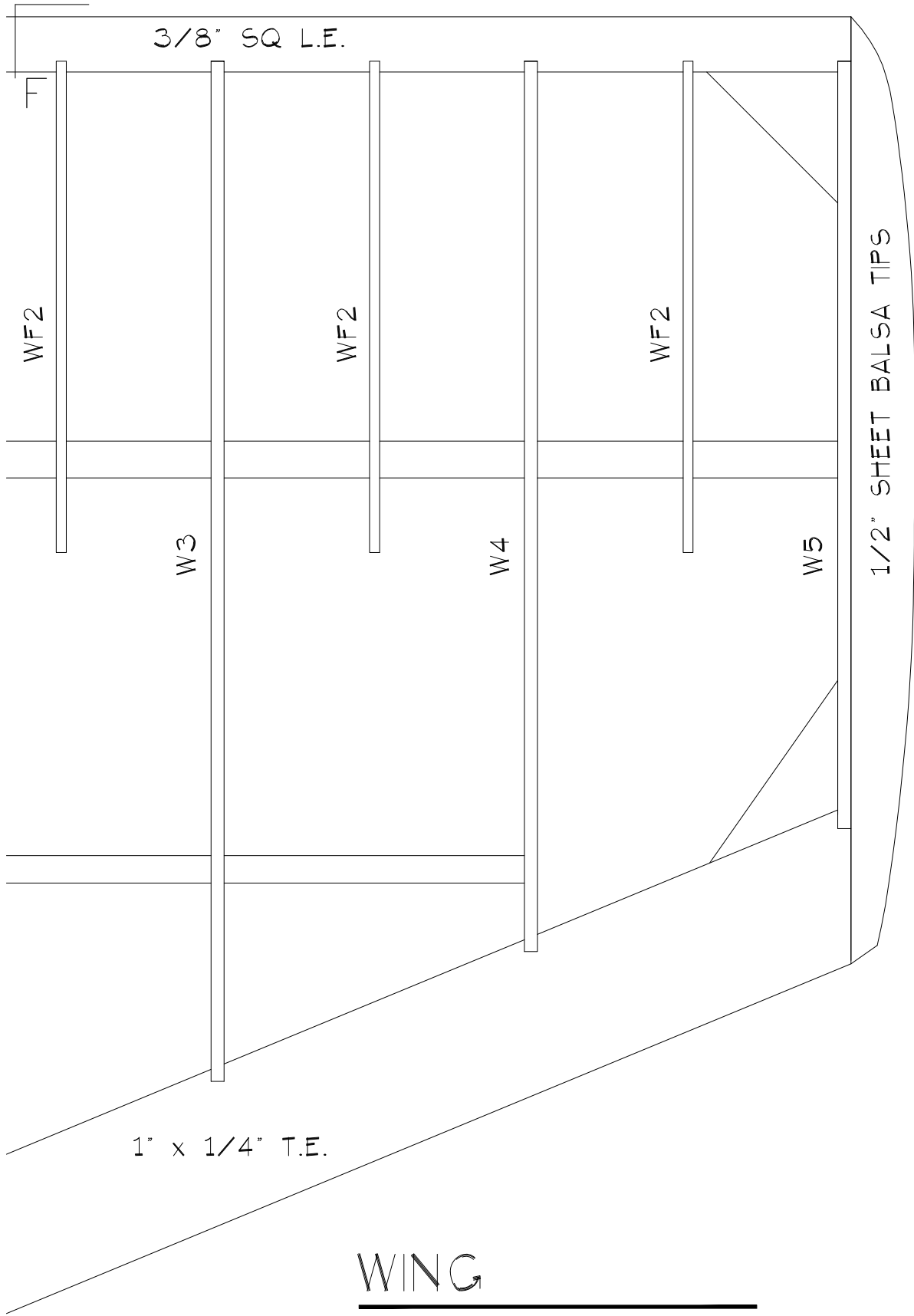
WC

WF2

W1A

WF1





WING

FULL SCALE



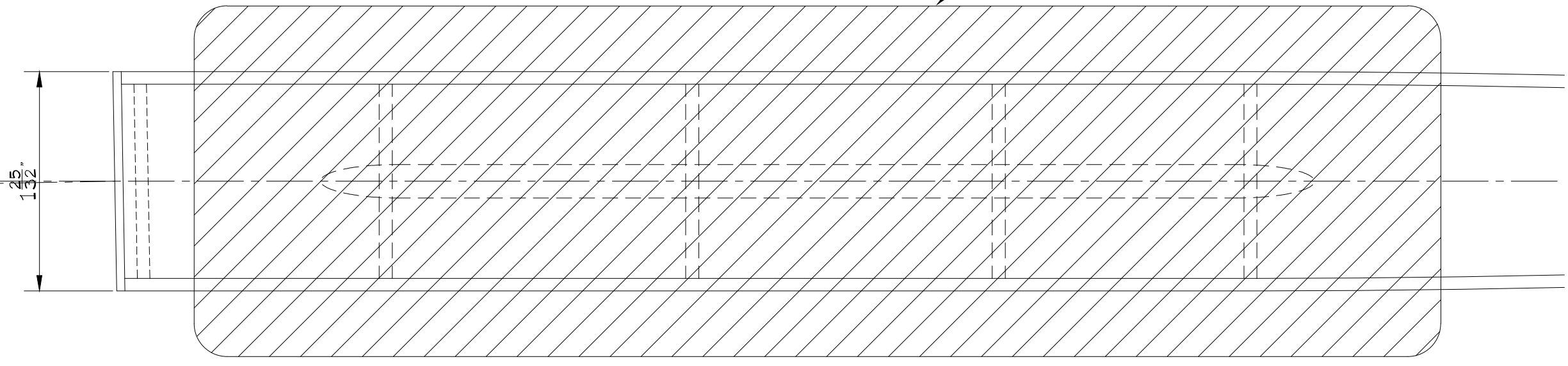
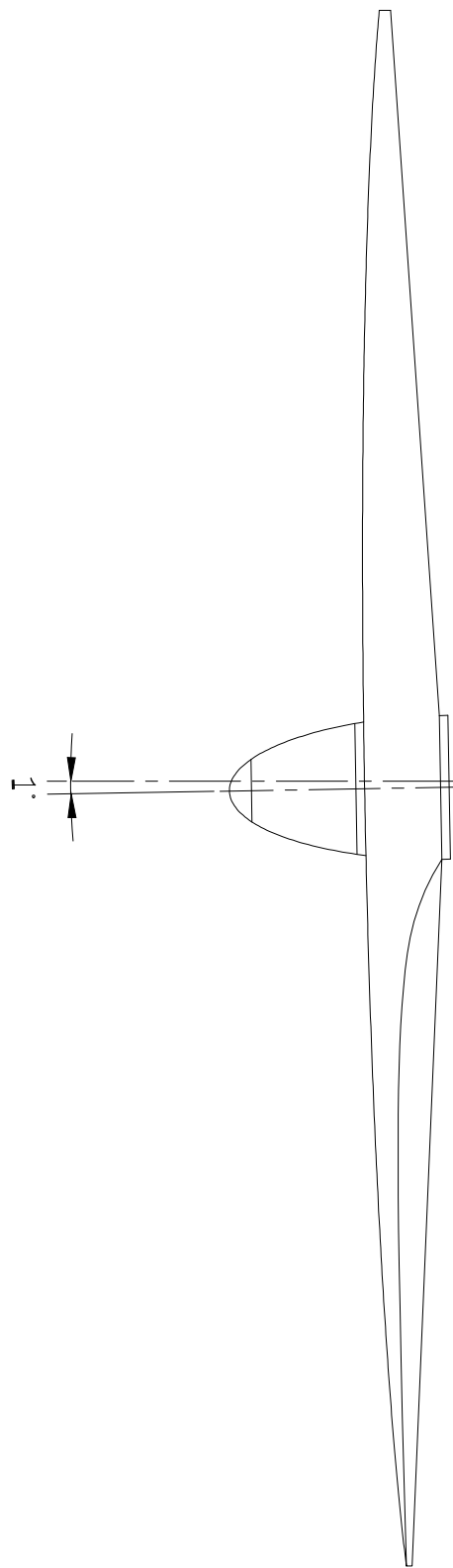
SCALE

F

E

F

E

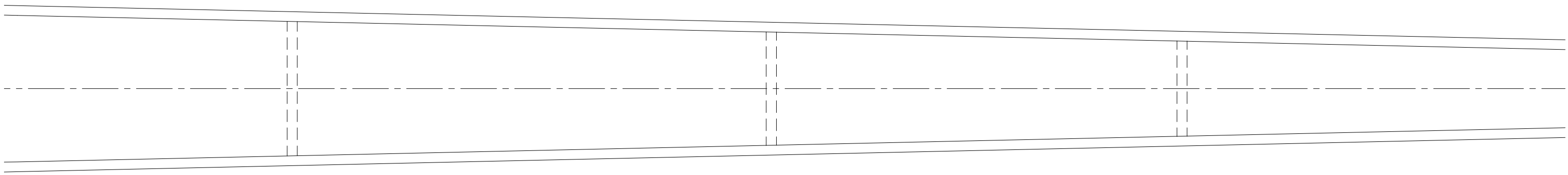


$\frac{3}{32}$ " WING PLATFORM

$1\frac{15}{32}$ "

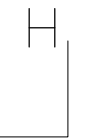
G

H

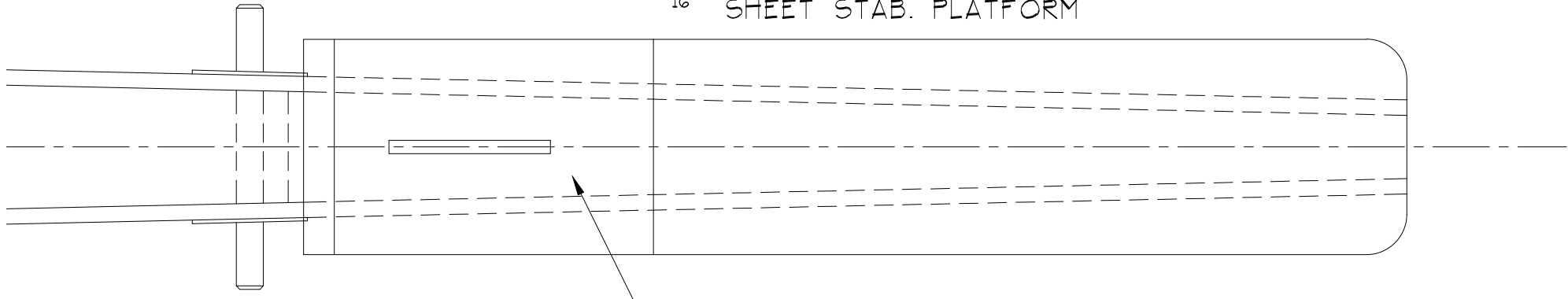


G

H



$\frac{1}{16}$ " SHEET STAB. PLATFORM



$\frac{1}{16}$ " PLY PLATFORM